



®

WILDER SIDE

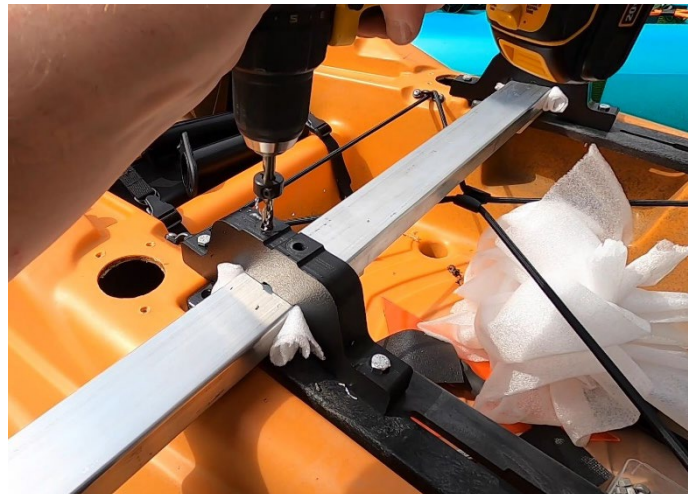
---

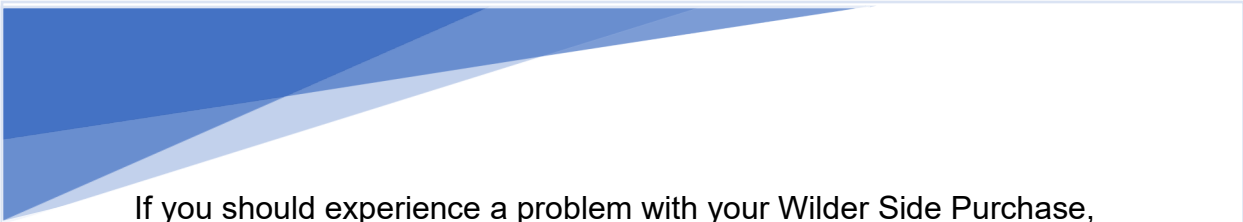
# Freedom Launcher ® Sportsman Kayak Edition

Assembly and Installation Manual

V3.8 02 JULY 2024

---





If you should experience a problem with your Wilder Side Purchase,

**CALL 1-833-949-4222 8A-6P M-F CST  
or 1-309-220-3947 (International)**

In many cases, a Wilder Side representative can resolve your problem over the phone.

### Safety Instructions:

When wheels are extended, intended solely for human manipulation of watercraft.

**DO NOT TOW WITH ANY MECHANIZED VEHICLE.**

Do not allow humans or pets to sit in or on watercraft while wheels are extended.

To be used to transport watercraft and gear via human power between a land point (such as a parking lot) and waterside landing location only.

When in doubt about your ability to manipulate the watercraft on wheels, ask a friend to assist when operating on an incline as hand loads increase due to gravitational pull, uneven terrain, or obstacles. Requires physical strength, coordination, and balance to safely launch watercraft using landing gear. Only use on inclines that you are able to safely navigate and control.

**WARNING: Keep children, pets, and operator hands and fingers out of the Freedom Bracket channel during use. Neglecting this may cause pinches or cuts to fingers or hands.**

## Preparing for Assembly

Thank you for purchasing your Freedom Launcher from Wilder Side. We hope you are delighted with the product, and it provides you with years of easier maneuvering of your kayak.

There are several small assemblies you will need to complete to prepare for installation onto your kayak. Most require simple hand tools and getting these ready will assist you on your adventure.

### **Tools Recommended:**

1. Socket drive with 7/16" socket
2. 7/16" box end wrench
3. Flat bladed screwdriver
4. 3/8" nutdriver or socket
5. 1/2" socket
6. 1/2" box end wrench
7. Drill
8. 1/4" & 5/16" drill bits
9. Rubber mallet
10. Torque wrench set to 18 ft-lb.
11. Jig saw or miter saw equipped with non-ferrous blade

## Unpacking your Landing Gear

It is recommended to place your large box on a sturdy surface such as a worktable as you begin the unpacking process. Your Freedom Launcher® from Wilder Side® should arrive in one long rectangular box containing the entire kit. Take the large rectangular box and open it and begin to inspect the parts. Your particular Bill of Materials (BOM) is contained in your owner packet (large manila envelope). A representative BOM is included below to support assembly instructions, which will include common parts to many versions of Freedom Launcher.

### **Example Parts Listing (See your insert pack for your specific BOM)**

14	WS-2N3331	2	Freedom Launcher Axle - Standard Length
15	WS-7P6657	1	Wheel post 8 degree LEFT - natural Aluminum
16	WS-1N1235	1	Wheel post 8 degree RIGHT - natural Aluminum
17	WS-2Q1288	2	Railblaza CTUG Wheel Assembly w/ WS Hub
18	WS-9Q9943	1	MG01 Gorilla Mount Bracket with Backing Cushions & SS Hdwr
51	WS-1Q6394	1	Small Parts Combo Kit - Gen 3 Tan on Black PCB
20	WS-2N4838	1	Crossbar 8 degree assembly w endcaps and tool - natural AL
21	WS-7N7487	2	Wheel Post End Cap
22	WS-1Q4597	1	Welcome Packet: Welcome letter; BOM listing; Assembly Instr.
			<b>KIT &amp; ASSEMBLY CONTENTS FOLLOW</b>
REF #	WS-9Q9943		MG01 Gorilla Mount Bracket with Backing Cushions & SS Hdwr
181	WS-7H3358	1	Gorilla Mount Kayak Bracket w Crossbar Hdwr
186	WS-5Q1632	1	Gorilla Mount Thru Hull Hardware Kit
	WS-7H3358	Qty	Gorilla Mount Kayak Bracket w Crossbar Hdwr
181	WS-5H9562	2	Gorilla Mount Kayak Bracket
182	WS-2H5669	4	Hex Head Cap Screw 5/16" by 3"L Gr 8 Aluma-coat
183	WS-9H4772	8	Washer 5/16" SAE Grade 8 Aluma-coat
184	WS-2Q7935	4	Lock washer 5/16" Grade 8 Aluma-coat
185	WS-9T9595	4	Nut 5/16" Grade 8 Aluma-coat
186	WS-5Q1632	Qty	Gorilla Mount Thru Hull Hardware Kit
187	WS-1P8344	4	Round Load Cushion 1.2"D
188	WS-2P1899	4	Oblong Cushion SML

Copyright© 2024 Wilder Side LLC. All rights reserved.

189	WS-7N8463	4	Oblong Cushion LRG
190	WS-1Q7798	4	Half Moon Washer 0.75" 0.375 tall
191	WS-9T7763	4	Hex Head Cap Screw Fully Threaded 1/4"-20 x 3L SS
192	WS-7Q5372	4	Hex Head Cap Screw 1/4" by 2.5"L Stainless
193	WS-1N6682	4	Locknut 1/4" Stainless
194	WS-1N6997	8	Washer 1/4" Stainless SAE
195	WS-5N3443	4	1/4" Fender washer Stainless 7/8" dia
196	WS-1P5541	4	Silicone seal 1.2"OD x 0.2"ID
51	<b>WS-1Q6394</b>	<b>QTY</b>	<b>Small Parts Combo Kit - Gen 3 Tan on Black PCB</b>
	WS-5N8859	2	Freedom Bracket Air Lite - Black Powder Coat
53	WS-5N9555	2	Tension Spring 6 in 0.360 OD Stainless
53A	WS-7Q4481	2	Spring Sleeve 9" Black
54	WS-5N9284	4	Side Handles
55	<b>WS-1T1133</b>	<b>2</b>	<b>Freedom Handle</b>
<b>56</b>	<b>WS-9N5397</b>	<b>1</b>	<b>Handle Hardware Kit - Stainless Pins</b>
<b>57</b>	<b>WS-5P2637</b>	<b>1</b>	<b>Axle Kit</b>
<b>58</b>	<b>WS-7N1663</b>	<b>1</b>	<b>Gen 3 Freedom Bracket Mounting Hdwr Kit</b>
	WS-9P6546	1	Freedom Launcher™ Decal - Gen 3 BLK on Tan
	WS-7P2426	1	Wilder Side™ Decal - Gen 3 BLK on Tan
	<b>WS-2N4838</b>		<b>Crossbar 8 degree assembly w endcaps and tool - natural AL</b>
	WS-7Q6848	1	Crossbar 8 degree one side finished - natural AL
	WS-1N2782	1	LH 8 deg end cap
	WS-7P9297	1	RH 8 deg end cap
	WS-1N5539	2	Crossbar end cap acetal insert V3
	<b>WS-5N9274</b>	<b>1</b>	<b>Crossbar 8 degree user tooling</b>
<b>REF #</b>			
	<b>WS-9N5397</b>	<b>1</b>	<b>Handle Hardware Kit - Stainless Pins</b>
561	WS-9Q9256	2	Hex Head Cap Screw 1/4" by 2"L Stainless
562	WS-1N6682	2	Locknut 1/4" Stainless
563	WS-9T7117	2	Machine Screw 10-24 by 1.0"L Flat Head
564	WS-1P7674	2	Locknut 10-24 Stainless
565	WS-2N9519	4	Hex Head Cap Screw 5/16" by 3"L Stainless
566	WS-7T2367	4	Locknut 5/16" Stainless
567	WS-1N3935	8	Washer 5/16" Stainless SAE
568	WS-5N7614	2	Clevis Pin 3/8"D x 2-1/4"L Stainless
569	WS-7H8845	2	Cotter Pin 1/8"D by 2-3/8"L Stainless
570	WS-9P8115	2	Clevis Pin 5/16"D x 3-1/2"L Stainless
571	WS-2T1125	2	Clevis Pin 5/16"D x 3"L Stainless
572	WS-2T1772	4	Cotter Pin 3/32"D by 1-5/8"L Stainless

Copyright© 2024 Wilder Side LLC. All rights reserved.

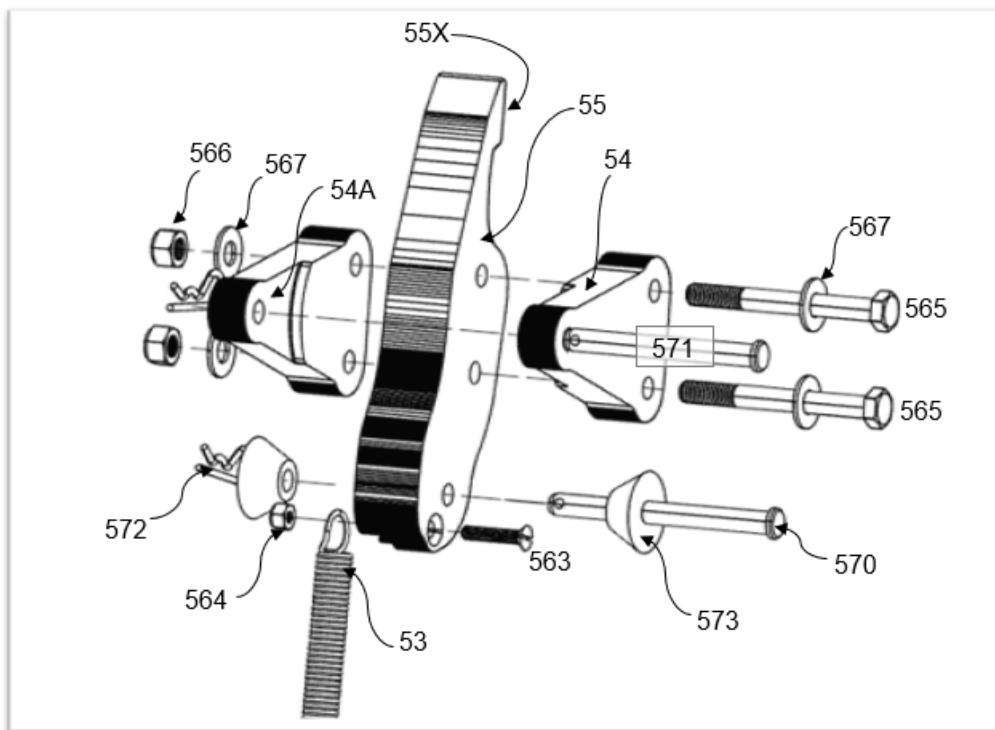
573	WS-2P1576	4	Tapered Washer for Lockpin
57	<b>WS-5P2637</b>		<b>Axle Kit</b>
<b>571</b>	WS-1H1821	2	Axle Lock
572	WS-5P6634	2	Machine Screw 10-24 by 1.5"L Stainless Round Head
573	WS-1P7674	2	Locknut 10-24 Stainless
574	WS-2N3182	2	Wheel Spacer Washer
575	WS-7H5363	2	Wheel Keeper Pin 1/4" by 1.75L Stainless Steel
<b>58</b>	<b>WS-7N1663</b>		<b>Gen 3 Freedom Bracket Mounting Hdw Kit</b>
<b>581</b>	WS-7T7864	4	Hex Head Cap Screw 5/16" by 1.75"L Gr 8 Aluma-coat
582	WS-9T9595	4	Nut 5/16" Grade 8 Aluma-coat
583	WS-2Q7935	4	Lock washer 5/16" Grade 8 Aluma-coat
584	WS-9H4772	8	Washer 5/16" SAE Grade 8 Aluma-coat

Copyright© 2024 Wilder Side LLC. All rights reserved.

## Leg Assembly

The first step in the Leg assembly is to complete the left and right Freedom Handle sub-assembly. Reference numbers in the **Example Parts Listing** correspond to the following diagrams. **TIP:** Leave hardware in bags until indicated.

Open the Small Parts Combo Kit and remove the contents onto a flat surface. It is helpful at this point to dispense item #56, the **Handle Hardware Kit** into a shallow tray. Lay a Side Handle #54 on a flat surface as shown in **Fig 1**. Then orient the Freedom Handle #55 as show so that the push pad #55X faces away from the single hole end of Side handles #54. Lay the other Side handle on top of #55. Orient the side handles so that faces **54A** are on the side closest to the Freedom Handle #55 as shown.



**Figure 1. Exploded Left Side Handle Assembly**

Place a #567 (5/16" washer) on each #565 cap screw as shown. Referring now to **Fig. 1**, take one of the #565 cap screws and press it into one of two holes on the double-hole end of the Side Handle #54, ensuring that each notched end (54A) of single hole end of part #54 face each other as shown in **Fig 1**. This notch provides clearance for the leg post.

Copyright© 2024 Wilder Side LLC. All rights reserved.

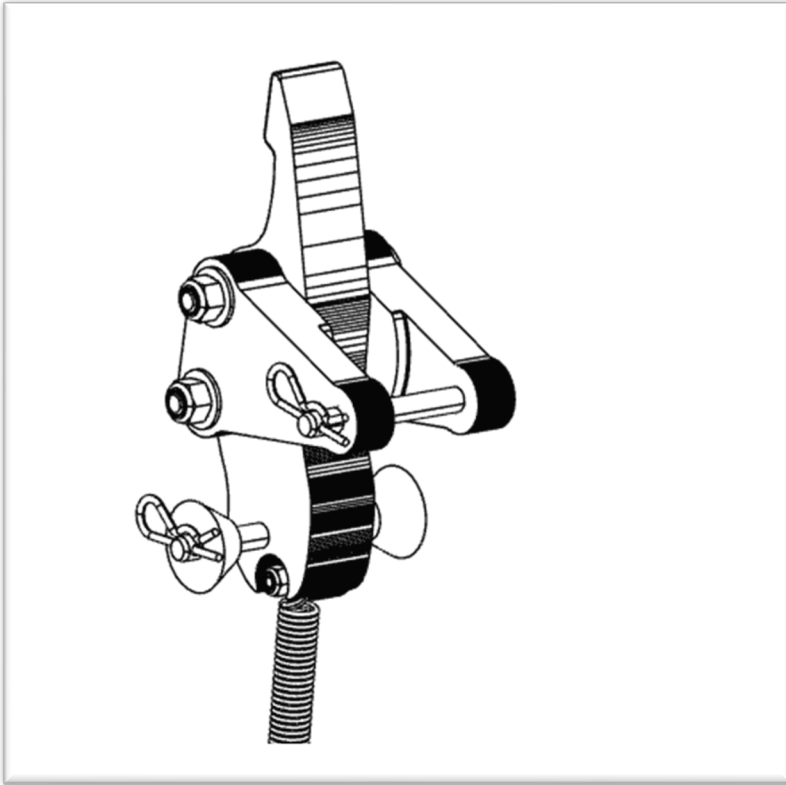
Continue pressing bolts #565 through Freedom Handle #55 and through the far Side Handle #54. You may want to put a piece of plywood shim under the lower side handle so you can drive the threads through the bottom hole. A light tap from a rubber mallet may be required. It is recommended now to brush out any plastic debris from the threads before placing a washer #567 and locknut #566 on ends of cap screw threads. Before tightening the locknuts, insert Pin #571 through the single hold end of Side Handles #54 as shown in **Figure 1**. This will ensure the bores of both side handles are aligned. Now tighten locknuts #566 onto cap screws #565 hand tight.

Place spring #53 into the spring pocket in bottom of Handle #54. Your spring should have arrived with a spring sleeve #53A installed. This device is to reduce chances of fishing line entanglement with the spring. Insert machine screw #563 into bore and through spring loop. Thread locknut #564 onto screw and tighten until end of screw is flush with end of nut. Leave play in joint so spring can move freely in pocket.

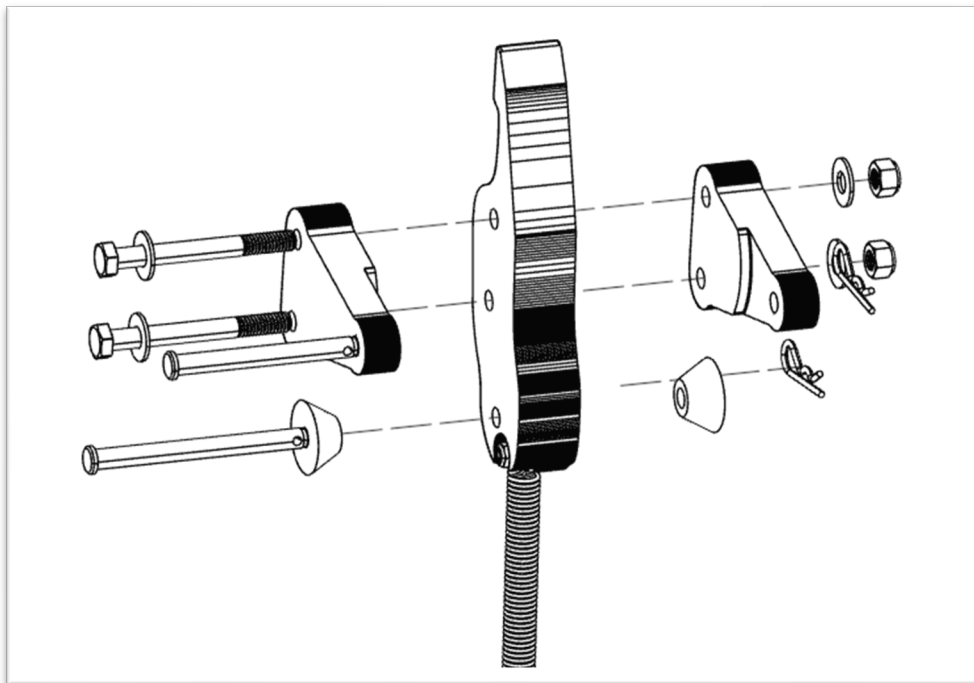
Slide tapered washer #573 onto Locking pin #570, ensuring the big end of taper is toward the end of the pin as shown. Now press the pin assembly through the lower 5/16" hole in Freedom Handle #54 as shown. Insert a second tapered washer #573 on the opposite end of pin #570, leaving clearance for the cotter pin. Now insert a cotter pin #572 onto pin #570. The subassembly should now be complete and look like **Figure 2**.

Repeat the steps for the left side handle assembly, except that you will flip the assembly 180 degrees before inserting the hardware. See **Figures 3 & 4** for reference. Using this convention will put the heads of the handle hardware facing the outside of the kayak and keep your left/right legs straight should you wish to remove them for transport and reinstall correctly at a later time.



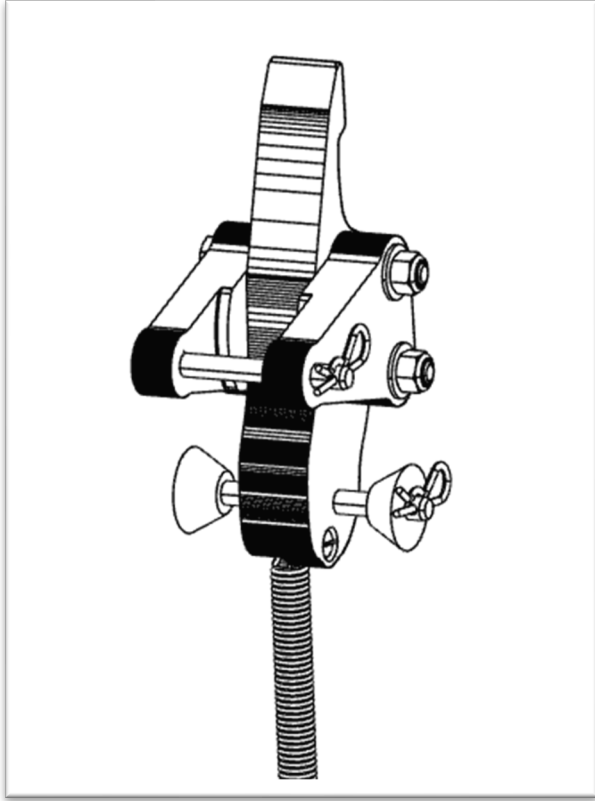


**Figure 2. Completed Left Side Handle Assembly**



**Figure 3. Exploded Right Side Handle Assembly**

Copyright© 2024 Wilder Side LLC. All rights reserved.



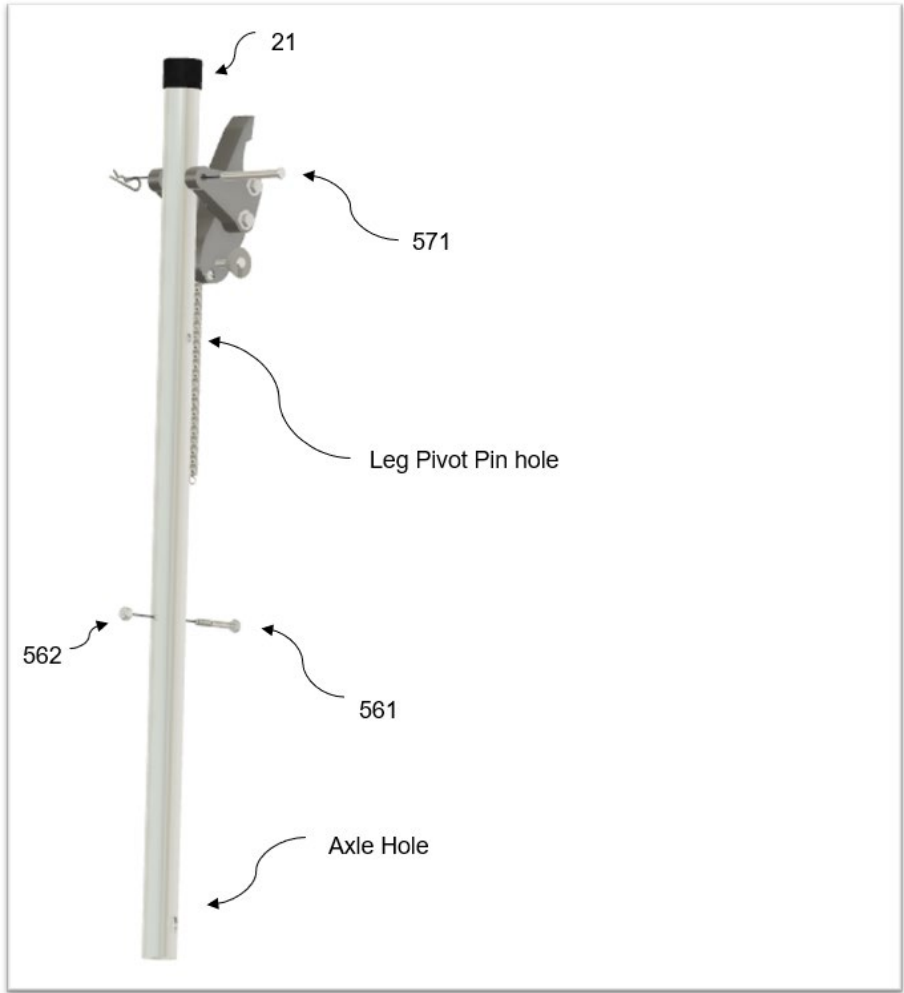
**Figure 4. Completed Right Side Handle Assembly**

### **Completing the Leg Assembly**

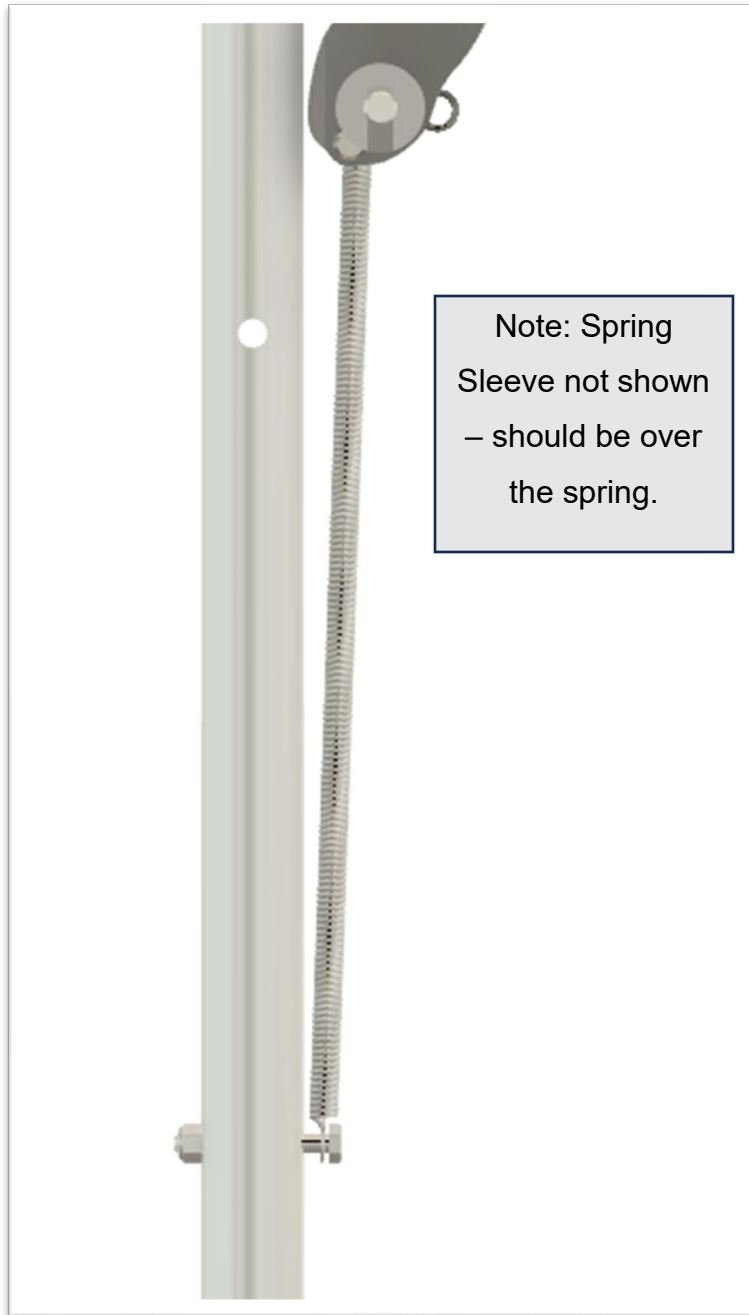
Find the left-hand leg #15 by looking at the open end; on the inside you should see both a number and a letter. The number represents the degree offset between the leg pivot pin hole and the axle hole when looking down the barrel of the leg. This offset allows the wheels to track straight when deployed. The letter will either be “R” for right or “L” for left.

Now, release pin 571 from the left freedom handle sub-assembly, and glide the side handles between the leg as shown and insert pin 571 back into the side handles and through the handle pivot hole of the leg. Reattach the cotter pin to secure the clevis pin. Find a 561 bolt and insert into the open end of the tension spring. Slide the spring sleeve over the spring. Now stretch the spring and twist slightly so that bolt 561 can be inserted in the lower spring tension hole which is located around mid-point on the leg. Secure bolt position with locknut 562, leaving play in the spring. **DO NOT OVER TIGHTEN.**

Copyright© 2024 Wilder Side LLC. All rights reserved.



**Figure 5. Left Side Leg Assembly**



**Figure 6. Completed Left Side Leg Assembly**

Follow a similar procedure to install the right-side freedom handle assembly to the right leg.

There are multiple styles of mounting solutions we have developed for customer installation of the Freedom Launcher, including:

- A. Gorilla bracket with Thru hull backing cushions
- B. Hobie PA bracket with blind gunwale bracket
- C. Gorilla bracket with Rail mount hardware
- D. Gorilla bracket with blind gunwale bracket

Please refer the appropriate section below for the specific mounting solution provided.

### A. Installing Gorilla bracket on a through-hull with backing cushions

Three additional resources are available to assist you in completing the crossbar installation. Please refer to the following:

1. See Youtube video of thru-hull installation – click [here](#) or use QR.
2. See document of mounting kit hardware – click [here](#).
3. See written documentation of installation process – companion to YouTube video click [here](#).



### B. Hobie PA bracket with blind gunwale bracket

Three resources are available to assist:

1. See pictures of install on short YouTube video [here](#).
2. Narrated install from first Hobie PA 12 customer [here](#).
3. There are also helpful tips on crossbar completion at approx. 8:09 YouTube [here](#).

### C. Gorilla Bracket with Rail Mount

See Thru Hull mount documentation. Rail mounts are a little easier in that there are no under cushions and the orientation of Gorilla mount is somewhat dictated by the rail slots.

## Notes on Finishing the Crossbar

Your crossbar is delivered with three items attached: 1) crossbar tooling; 2) opposite side end cap; and 3) end cap insert pre-installed in the finished end. The crossbar is delivered with approx. 2" excess length, depending on your kayak model.

There are two methods of finishing the crossbar demonstrated on YouTube. User decides which will be best for their particular situation.

- 1) Using a **miter saw** with non-ferrous blade: Click [here](#) to see demo#1.
- 2) Using a **jig saw** to cut aluminum crossbar: Click [here](#) to see demo#2.

Fit up one side of the crossbar using the machined holes to temporarily install a Freedom bracket. Then install a leg assembly. Ensure that all existing accessories allow for free travel of your Freedom Launcher leg & wheel on both sides of your watercraft at the desired crossbar projection outboard your kayak. Test in the stowed and deployed states. Determine the length of crossbar necessary to fit your boat. Under no circumstances should you cut the crossbar less than a total width of 6.5" + total width of hull at mounting location. Typical crossbar projection is 3.5"-4.0" on each side, meaning your crossbar will be 7.0"-8.0" wider than your kayak at the mounting location. Cutting the crossbar too short may cause the axle locks to bump against the hull. Once the overall length is determined; use a miter saw, jig saw, hacksaw or bandsaw to cut the crossbar to desired length and angle, and then **use the included tooling** to drill the two Freedom Bracket mounting holes in the appropriate location. Note: You may need to drill with the crossbar upside down to get the right angle on the crossbar engagement with the tooling. Ensure that both edges of the crossbar form a "V" with the point angling in towards the rear of the hull.

**IMPORTANT NOTICE:** The crossbar should be a bare end when installing the drill tooling as shown in figure to the right. **DO NOT** install the opposite endcap insert until the drilling operation is complete.



## Drilling the crossbar mounting holes

Four center holes are required to connect the crossbar to the kayak mount which will be either a Gorilla mount or a PA style angle bracket. Use a 5/16" drill bit; a bit stop comes in handy to drill through the bottom of the crossbar. Use the Gorilla mount holes as drill guides. Center the Gorilla mount on the crossbar fore and aft. Two equal thickness of packing cushion works well to temporarily keep the crossbar centered in between the



Gorilla bracket. See video for details. Quick release wood clamps also come in handy to secure crossbar temporarily in relation to the Gorilla bracket.

Copyright© 2024 Wilder Side LLC. All rights reserved.

## Final mount of the cross-member assembly

186	WS-5Q1632	Qty	Gorilla Mount Thru Hull Hardware Kit
-----	-----------	-----	--------------------------------------

Open **item #186** found in your mounting group.

Use the included 5/16" x 3"L Alumina-coat bolts included to secure the cross-member to the Gorilla bracket. Do not over tighten, as the hollow tube and or plastic may yield.

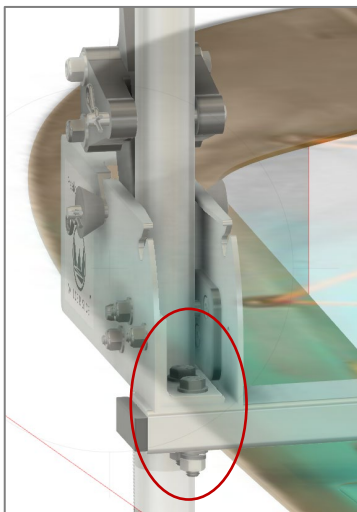
Snug hand tight only, ensuring that the lock washers fully compressed. Because this joint isn't torqued tightly, it is good idea to use blue loc-tite on this bolted joint.

## Mounting Freedom Brackets onto the cross-member assembly

58	WS-7N1663	1	Gen 3 Freedom Bracket Mounting Hdwr Kit
----	-----------	---	---

Find **item #58** in the Small Parts Combo Kit. Use the included 5/16" x 1.75" hex bolts. Assemble using the following illustration.

See Illustration below. As an aide, the product labels for the Freedom Launcher will also be on the outboard face(s) of the Freedom Bracket.



**Tighten the bolted joint to 18 ft-lb of torque.**



## Installing the Leg Assembly



NOTE: **There is a Left and Right Leg.** Legs should arrive be marked on the inside or outside of the axle end with a “R” for right side or “L” for left side. Do not interchange. **Installing legs on opposite sides will result in the axles not being parallel when deployed.** Slide the Axle end of the leg assembly into the top of the Freedom Bracket. Rest the position locking pin into the front restraining slots. Note: The Freedom Handle should be on top of the leg

when the leg is laying horizontally in the Freedom Bracket. The leg will hang there. Gently pull on the leg back; and wiggle up or down until the 3/8” holes in the Freedom Bracket align with the pivot pin hole in the leg. Find item #568 3/8” Clevis pin found in the Handle Hardware kit. Insert the clevis pin into the pivot holes; convention is to start from the outboard side and push in. I prefer to have all the clevis pin heads outboard and all the cotter pins inboard. **USE THE LARGE COTTER PIN** on the 3/8” leg pivot pin. It is there to make it easier to remove if you need to remove the leg.

Note: Your crossbar and legs should form a matched set. A 5 degree leg sweep crossbar only fits with 5 degree legs. If for some reason, you received a set with mismatched angles, please call us to rectify the situation before proceeding with installation!! We offer four different leg sweep angles to match a wide variety of kayak and canoe hull shapes. Your configuration was selected to best fit your particular hull shape with legs that neatly fit up near the gunwale when stowed.

## Assembling the Axle

57	WS-5P2637	1	Axle Kit
----	-----------	---	----------

Open **item #57** found in your Small Parts Combo Kit.

Slide the plastic “C” shaped axle lock onto the axle such that the “C” shape faces towards the center of the axle and the hole in the axle lock is over the smaller hole in the axle. Insert the 1.5” 10-24 screw into the axle lock and through the axle and secure the screw with a 10-24 locknut. Repeat procedure for the second axle.

## Mounting the axles and wheels

Insert the free end of the axle assembly completely into the inboard axle hole of leg until the axle lock engages with the leg as shown. Next slide the wheel spacer washer onto the axle; then the wheel; and finally hold the assembly in place with the ¼” stainless steel safety pin.

Note: Ignore wheel orientation in the diagram, have the nicer looking side of wheel facing outboard!!



## Transportation Tips

Wheels can be left on the watercraft for short trips if under 30 mph. For longer trips or higher speeds, it is recommended to **remove the wheels and axle assembly** and store in a storage compartment of your watercraft or vehicle. Another option is to use a bungee cord to secure legs and wheels from bouncing during travel. Either way, Leg assemblies travel well and can remain in the Freedom Brackets under most circumstances.

Copyright© 2024 Wilder Side LLC. All rights reserved.